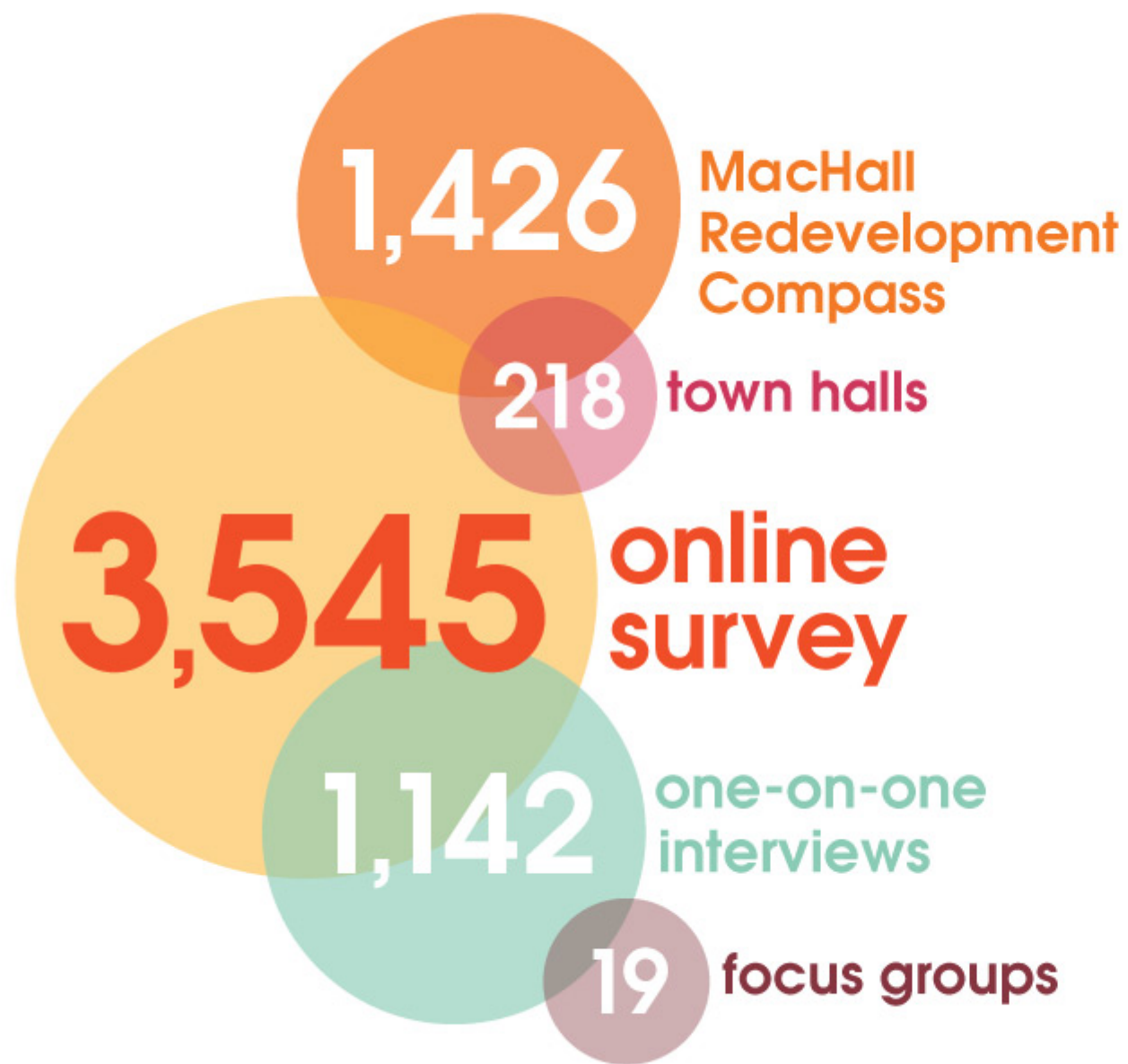


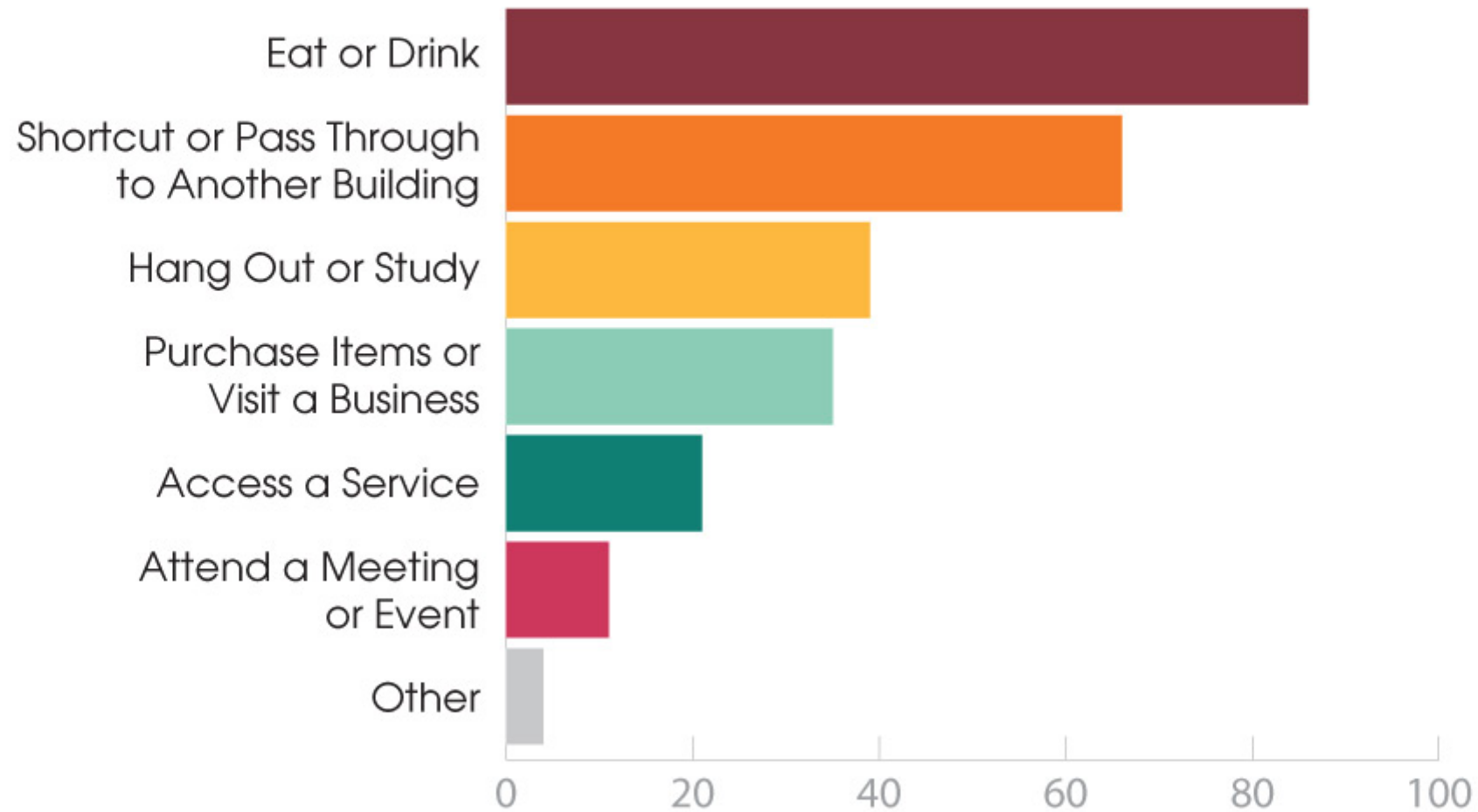


Deciding the Future of MacHall

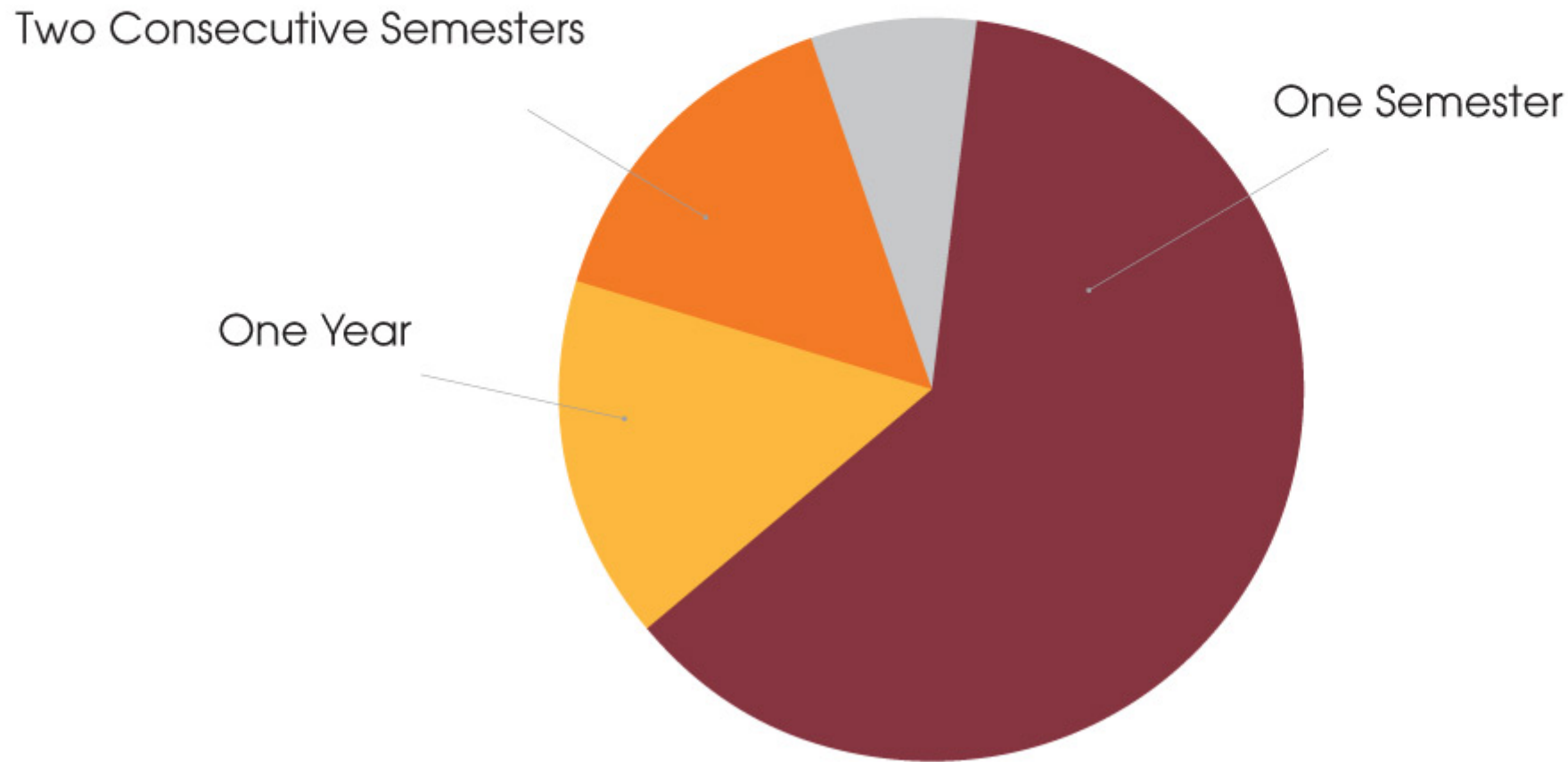


= 6,350
participants

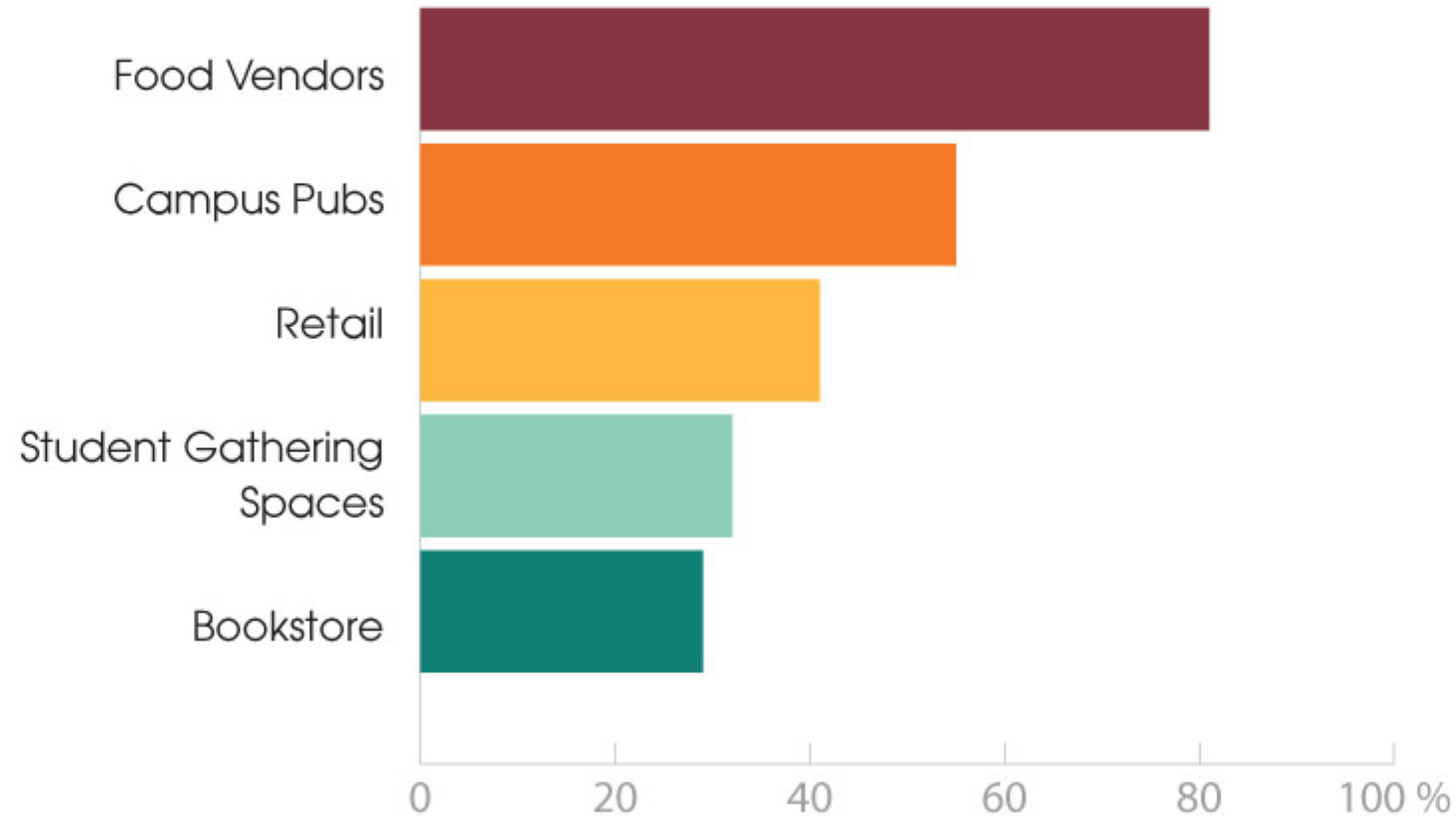
MSC Typical Usage



Maximum Tolerable Inconvenience Related to Construction



Services and Functions that Should be Located in High-Traffic Areas



Video #1



Deciding the Future of MacHall

Recommendation #2

“Maintain or increase dining options and increase dining seating space.”

Recommendation #4

**“Increase study
and social space.”**

Recommendation #8

“Increase SU commerce in a redeveloped MacHall to contribute to funding this initiative.”

Recommendation #9

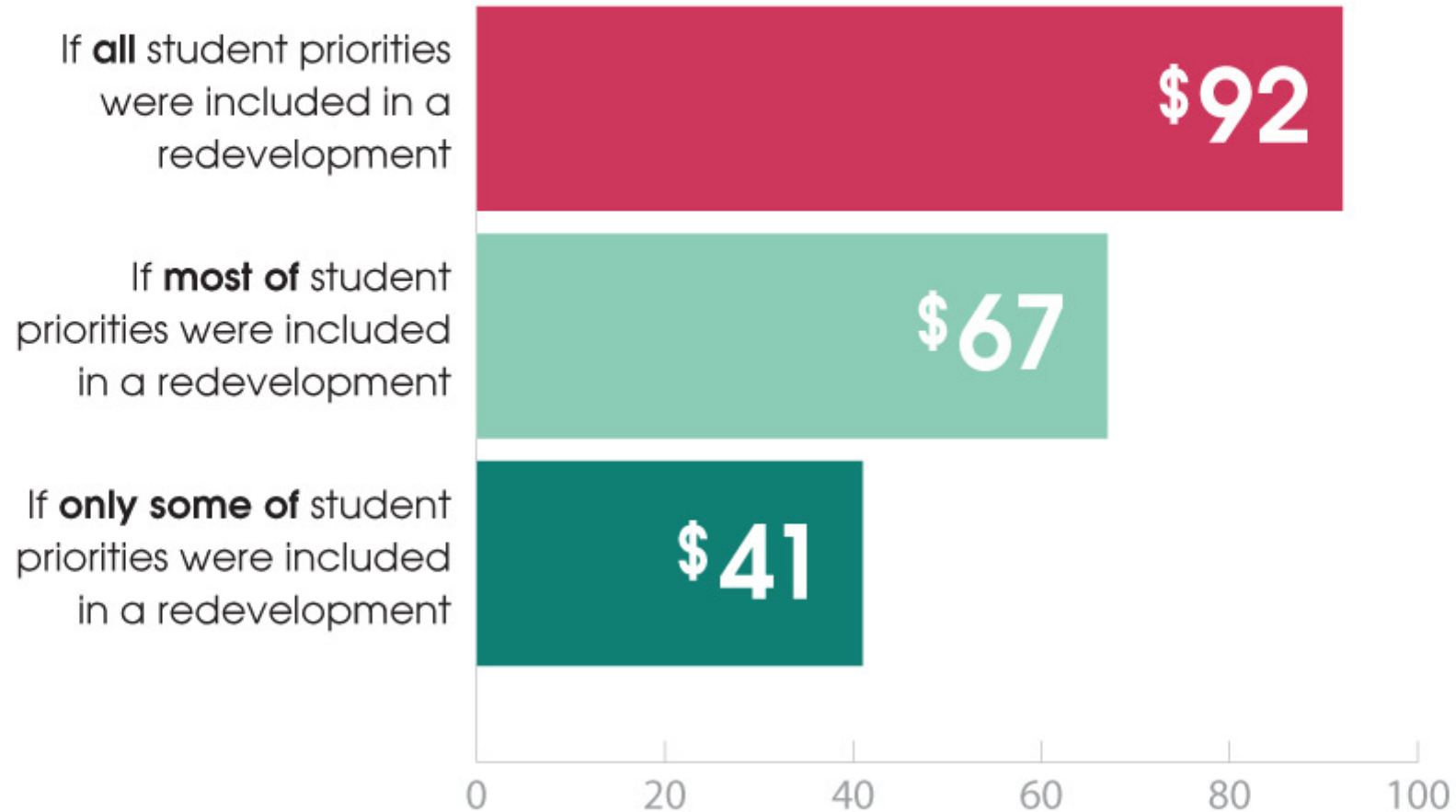
“Maintain food services and access to core student support services during the redevelopment process.”

Video #2



Deciding the Future of MacHall

Dollar Amount Students Would be Willing to Pay for a Future Redevelopment



The future of
MacHall will be
for **you** to decide.

